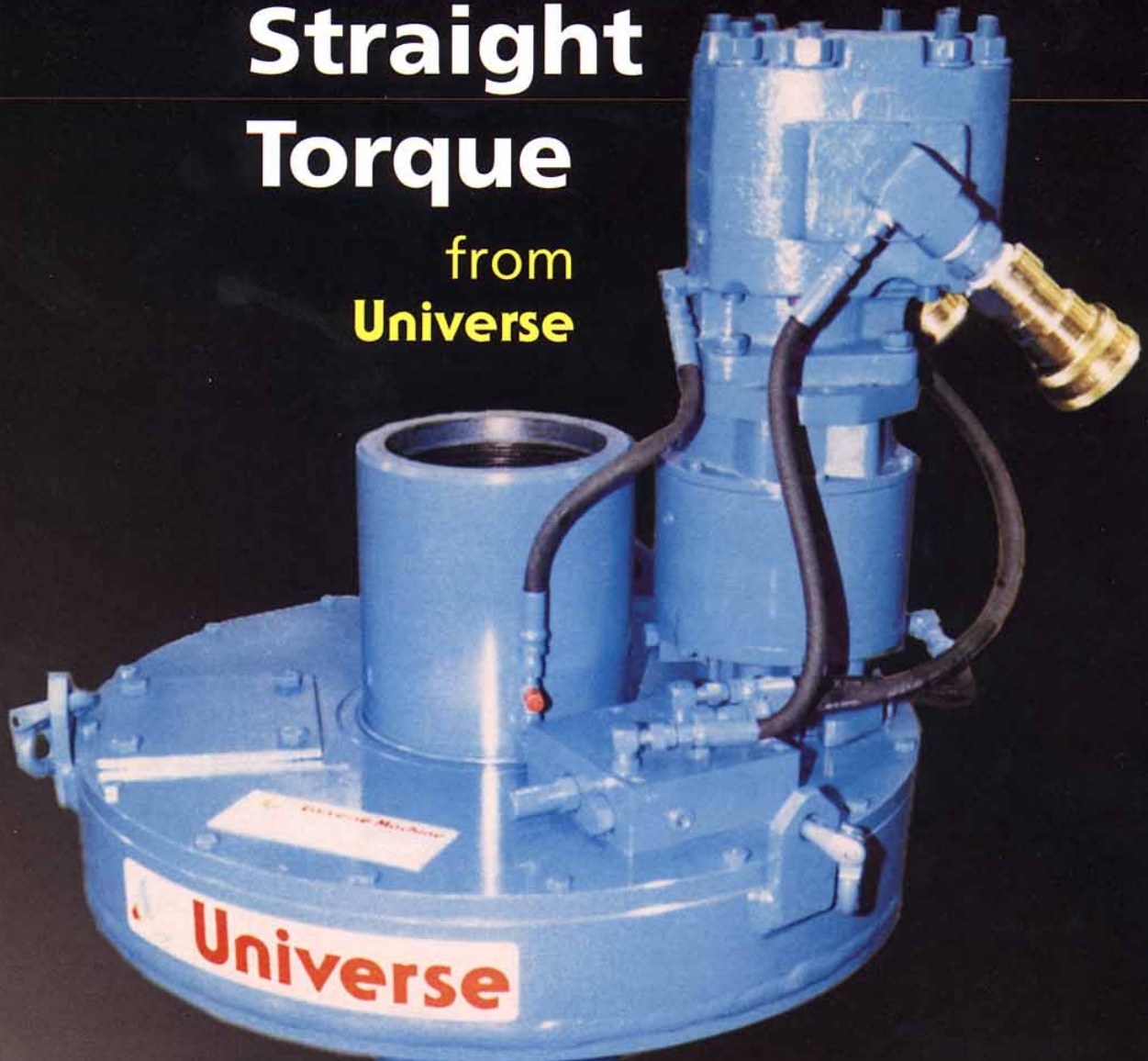
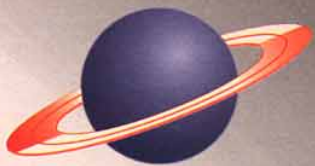


**Straight  
Torque**  
from  
**Universe**



**Kelly  
Spinners**



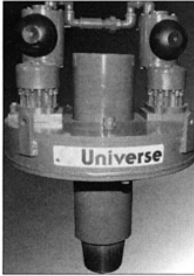
**Universe  
Machine**  
CORPORATION

Phone (780) 468-5211  
Fax (780) 468-5430

E-mail: [sales@umcorp.com](mailto:sales@umcorp.com)  
Internet: [www.umcorp.com](http://www.umcorp.com)

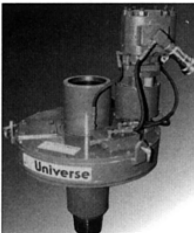
5546-89th Street,  
Edmonton,  
Alberta  
Canada  
T6E 5P9

# Universe Kelly Spinner



## Air Unit

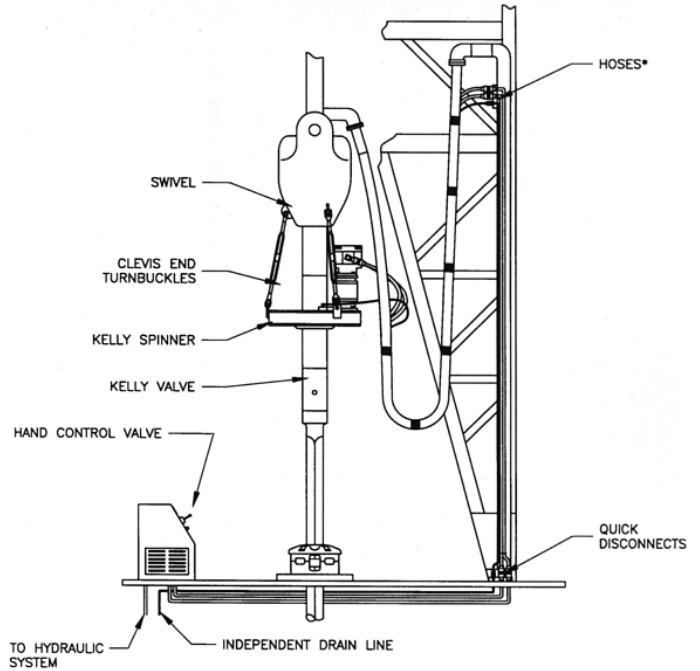
- Bendix is positive and permanently aligned on assembly
- Available in single or dual direction operation
- Powered by non-lube air motor with built in relay valves and mufflers



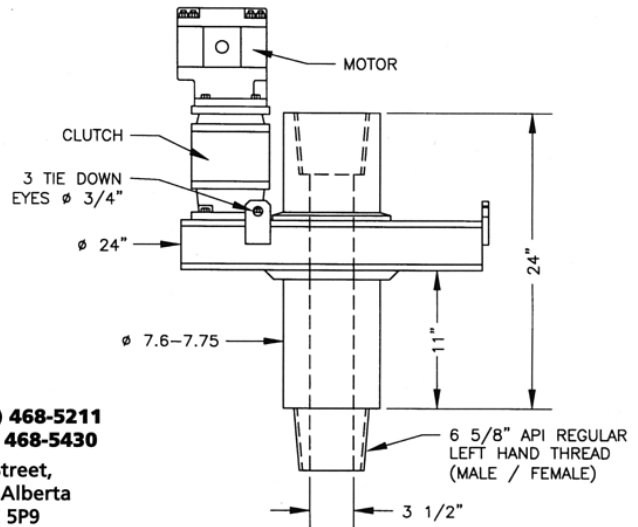
## Hydraulic Unit

- Operation is simple with the use of a 4 way, 3 position open center valve. The Kelly Spinner can run forward, neutral, or reverse from the rig floor, simply with the pull of a handle

- Powered by rugged hydraulic gear motor



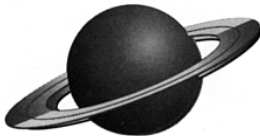
NOTE:\* - HYDRAULIC SPINNER REQUIRES A PRESSURE, RETURN, AND AN INDEPENDENT DRAIN LINE. (AS SHOW ABOVE)  
 - AIR SPINNER REQUIRES A MAIN PRESSURE LINE AND TWO PILOT LINES. AN AIR FILTER IS INSTALLED ON THE MAIN SUPPLY LINE. (NOT SHOWN)



Type	Maximum Torque ft.lb (kg.m)	Weight lbs (kg)	Power requirements	Maximum Speed rpm	Model
Air:	1050 (146)	750 (340)	1-8 CFS / 90-150 PSI	170	06A
Hydraulic:	1800 (248)	670 (248)	35 GPM max / 2500 PSI max	125	06H

## Features:

- Mounted to bottom of swivel eliminating the need for dangerous spinning chain
- Driller can continue to turn rotary table while making a connection with the Kelly spinner
- Enclosed oil bath lubrication extends life of bearings and gears w/reduced maintenance
- Spark-free operation
- Does not have jaws or break bands
- Optional power trains are available: for exact torque's and speeds see applicable engineering data sheets



**Universe  
Machine**  
CORPORATION

Phone (780) 468-5211  
 Fax (780) 468-5430  
 5546-89th Street,  
 Edmonton, Alberta  
 Canada T6E 5P9  
 E-mail: sales@umcorp.com  
 Internet: www.umcorp.com

Dealer: