

Universe MACHINE

Hog

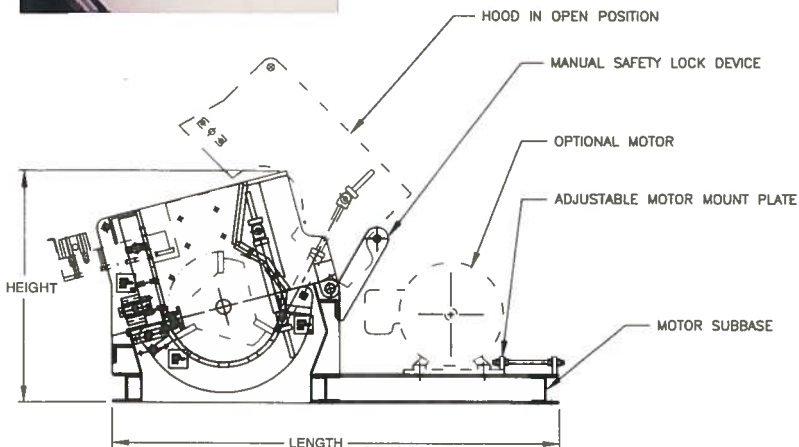
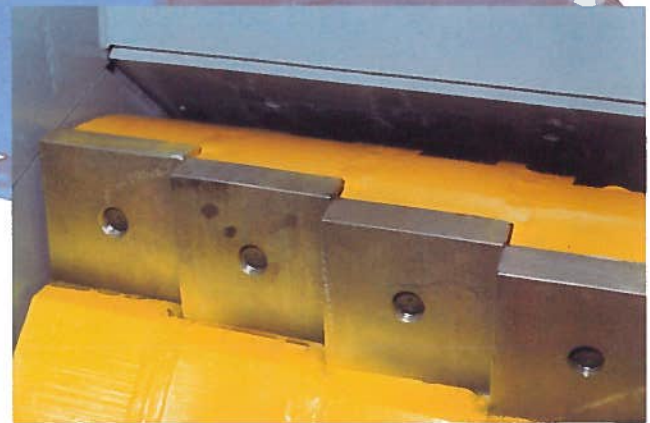
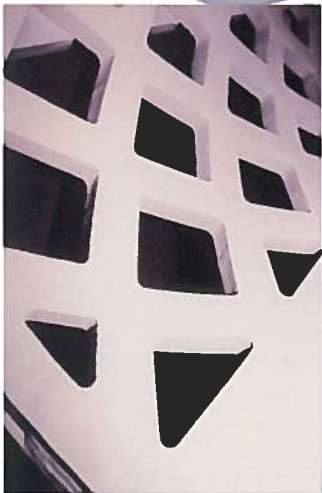
This ruggedly designed machine provides the maximum production of shredded waste materials at the lowest cost per ton.



The unit is fully capable of shredding all types or species of wood & waste even when contaminated with rock.

The Universe HOG is built to the highest industry standards and our company complies with the stringent ISO 9000 quality assurance program.

Our hog is fully warranted, and backed by our company's reputation for meeting our customer's expectations since 1965.



Universe MACHINE

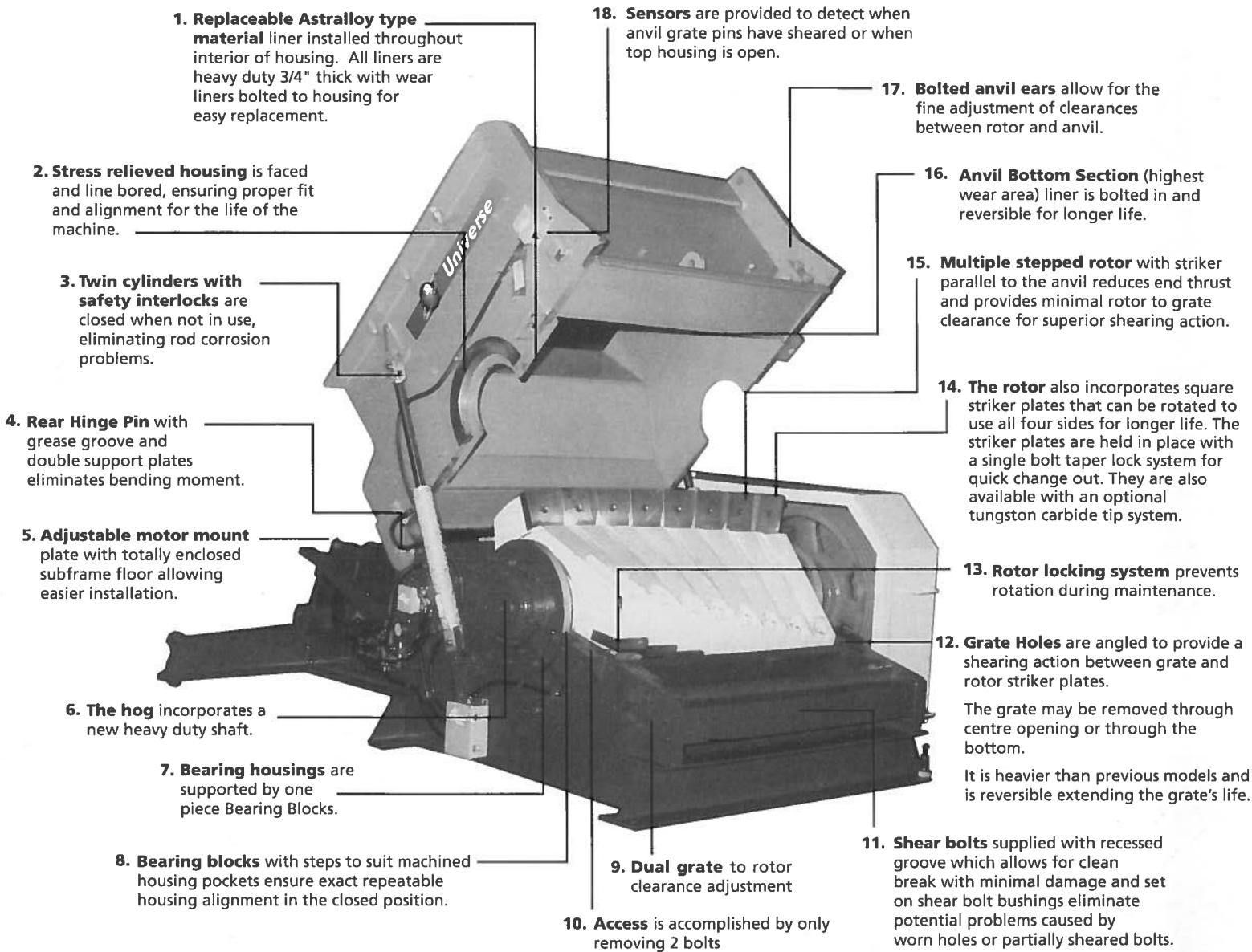
5546 - 89 Street, Edmonton, Alberta,
Canada, T6E 5P9

Phone: (780) 468-5211 Fax: (780) 468-5430

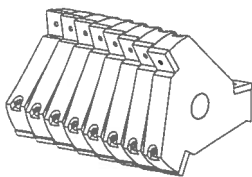
sales@umcorp.com

<http://www.umcorp.com>

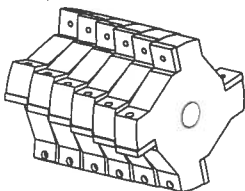
- Handles contaminants such as rock
- Adjustable cutter space clearances
- Solid high inertia rotor with impact & shearing action
- Quick change out striker plates useable on 4 edges



Standard 3 flute rotor



Optional 4 flute rotor



Model 11C Size	Capacity Tons \ Hr	HP Range	Rotor RPM	Rotor LBS	Total LBS	Overall Size (Inches)		
						height	length	width
60 x 72	135 - 185	800 - 1100	450	33,200	80,300	100	190	98
60 x 60	110 - 160	700- 1000	450	28,100	72,000	100	190	86
48 x 72	80 - 125	500 - 800	565	22,000	47,600	81.5	160	91
48 x 60	65 - 100	400 - 700	565	18,500	40,500	81.5	160	79
48 x 48	48 - 75	300 - 600	565	15,000	34,500	81.5	160	67
36 x 60	30 - 50	250 - 400	750	10,000	27,800	61.5	134	79
36 x 48	23 - 36	200 - 350	750	8,700	23,300	61.5	134	67
36 x 36	16 - 24	150 - 300	750	6,600	17,000	61.5	134	55
24 x 36	9 - 15	125 - 200	1200	3,100	9,700	50.5	105	55
24 x 24	5 - 8	100 - 150	1200	2,000	7,550	50.5	105	43

Figures are representative, based on model 11c and should be verified prior to order.

Patent Pending.

Printed in Canada © 10/18/99

