

Description: Skid mounted, diesel hydraulic power unit, for operation of casing and tubing tongs

Standard Specifications:

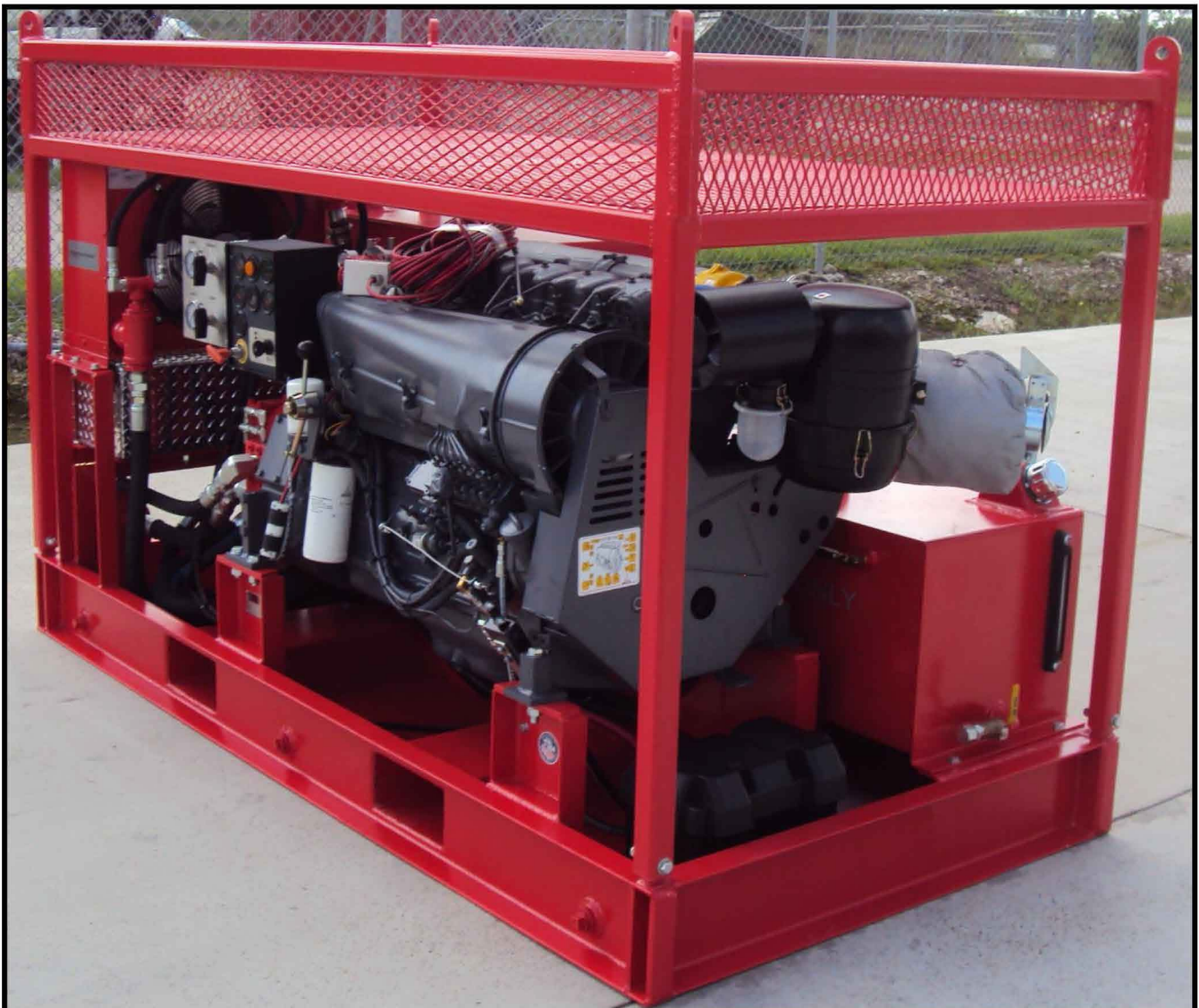
- Deutz D914L06, 6 cylinder, four cycle, air cooled diesel engine, 115.9 HP @ 2300 RPM
- Instrument panel with engine speed, oil temperature and oil pressure
- Electric start with battery
- Safety package with automatic over speed shutdown, emergency manual air intake shutdown, spark arrestor
- Shutdowns for low oil pressure, high oil temperature, fan belt break
- Diesel fuel reservoir with level gauge, drain port with ball valve, filler breather
- Hydraulic or manual throttle
- Gear pump for tong open center circuit, high/low valves to deliver:
60 GPM up to 1500 PSI, then 30 GPM up to 3000 PSI
- System relief valve with 3500 PSI maximum setting
- 0 to 5000 PSI pressure gauge
- Control valves for standby/work and casing/tubing modes
- Air over oil heat exchanger with hydraulic motor
- Hydraulic reservoir with baffle, level gauge, oil temperature gauge, cleanout cover, suction strainer with isolation ball valve, return filter, return pressure gauge, drain port with ball valve, filler breather

Diesel Hydraulic Power Unit for Casing and Tubing Tongs

- Oilfield type base skid with drip pan, drain ports, fork lift pockets
- Lift cage with hose basket
- Aluminum diamond plate box for small parts and tools storage
- Dimensions: Length: 120", Width: 48", Height: 62", Weight: 4000 lbs (no fluid in tank)
- Compact Dimensions: Length: 96", Width: 48", Height: 62", Weight: 4000 lbs (no fluid in tank)

Options:

- Deutz D914L04, 4 cylinder, four cycle, air cooled diesel engine, 70 HP @ 2100 RPM (reduced pressure output)
- Deutz F6L914, 6 cylinder, four cycle, air cooled mechanical diesel engine, 114 HP @ 2300 RPM
- Deutz TCD914L06, 6 cylinder, four cycle, air cooled, turbocharged, aftercooled diesel engine, 165 HP @ 2100 RPM
- Air start or mechanical spring start
- Lift cage design per SEPCo OPS0055 and API RP2A with 2.5 x SWL load test
- Remote shutdown E-stop button, 100 ft cord (electric start only)
- 12 V starting aid intake preheat, 120 V oil pan heater (electric start only)



Diesel Hydraulic Power Unit for Casing and Tubing Tongs